



1 Moorside Road
West Moors, Ferndown, BH22 0EH

£795 Per month



1 Moorside Road

West Moors, Ferndown, BH22 0EH

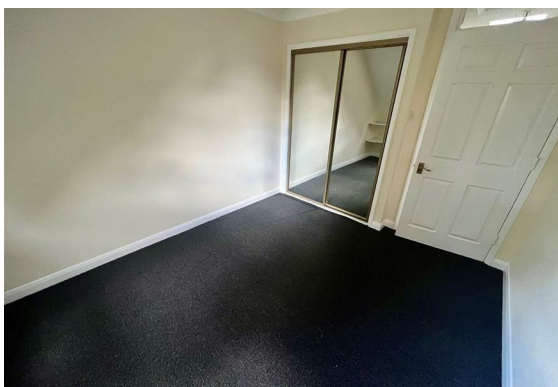
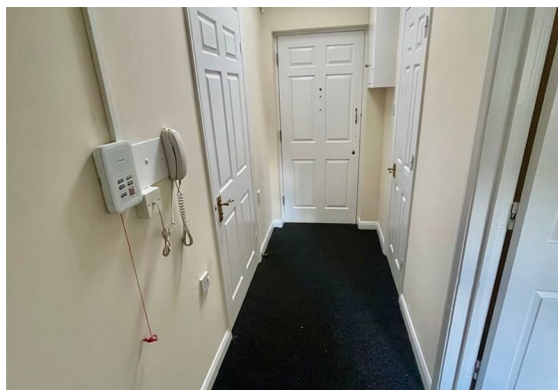
AVAILABLE SEPTEMBER This well presented newly re-decorated and carpeted unfurnished flat is in a select development situated within walking distance of West Moors village centre with its range of shops, amenities, and public transport links.

Berkeley Court benefits from a residents lounge, laundry and drying facilities, security entry system, passenger lift and a guest flat available at a nightly rate for visitors.

Upon entering the flat you are greeted by an entrance hall with main entrance door intercom, emergency call pull and built-in airing cupboard. The lounge/diner with emergency call pull, dormer window fireplace and hearth. Off of the lounge is the kitchen with wall and base units incorporating stainless steel sink unit, space for tall fridge/freezer and freestanding oven. The bedroom has TV aerial and telephone points, emergency call pull and built in double mirror door wardrobe. Completing the property is the bathroom with bath with shower attachment over, wash hand basin and WC.

Mature landscaped communal gardens and off road parking

Please note: This is an OVER 60's DEVELOPMENT





Lounge/Diner
15'11" x 10'0" (4.87 x 3.07)

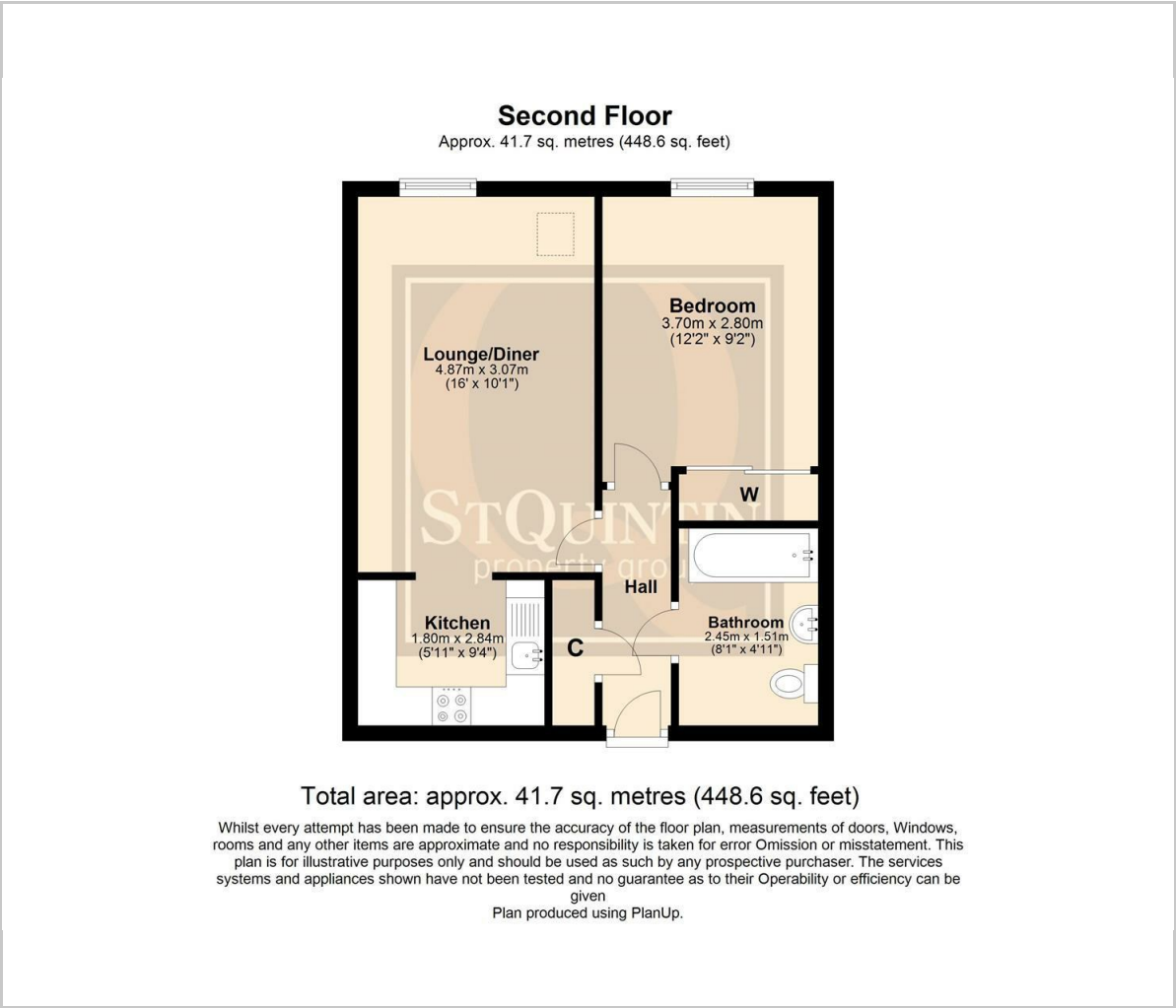
Kitchen
5'10" x 9'3" (1.80 x 2.84)

Bedroom
12'1" x 9'2" (3.70 x 2.80)

Bathroom
8'0" x 4'11" (2.45 x 1.51)



Floor Plan

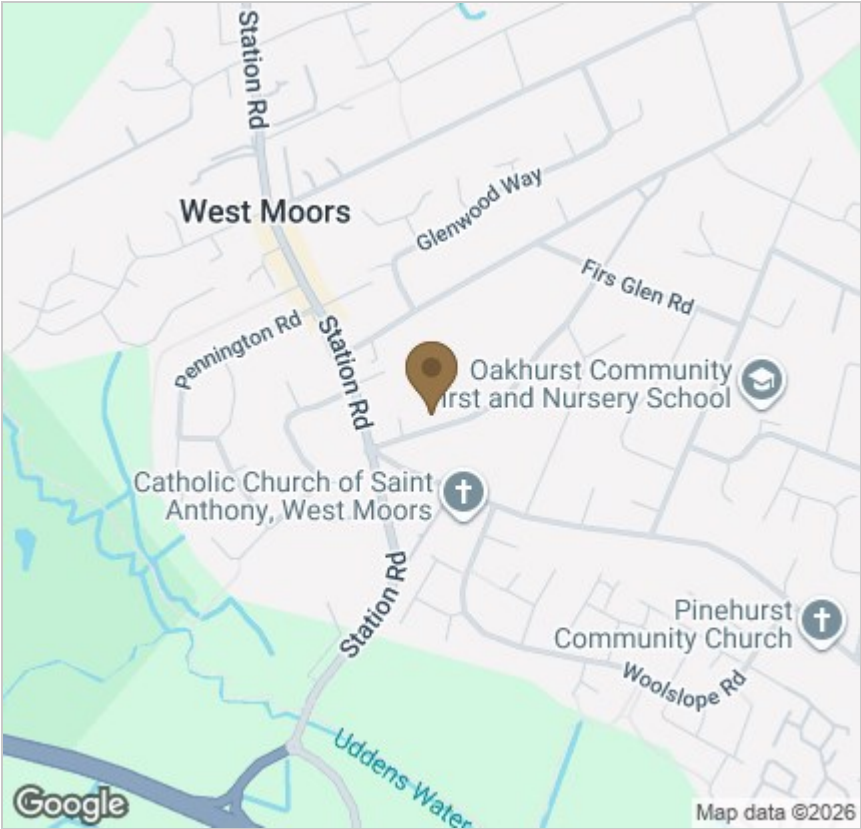


Viewing

Please contact our StQ Property Group Office on 01202877123 if you wish to arrange a viewing appointment for this property or require further information.

These particulars, whilst believed to be accurate are set out as a general outline only for guidance and do not constitute any part of an offer or contract. Intending purchasers should not rely on them as statements of representation of fact, but must satisfy themselves by inspection or otherwise as to their accuracy. No person in this firms employment has the authority to make or give any representation or warranty in respect of the property.

Area Map



Energy Efficiency Graph

